

# Feeneys Clay Bodies

## Handbuilding

HB

AR6

**Bisque:** 1000°C Orton Cone 06 - Minimum

**Firing Range:** 1000-1280°C Orton Cone 06 - 9

A strong sandy clay for large thrown or handbuilt pieces using all standard techniques. It fires from 1000 to 1280 and vitrifies above 1320.

It has a medium texture and good plasticity.

It develops beautiful bisque colour and developing trachyte flecks from 1200°C.

Not really suitable for functional ware.

Suits glazes from all temperature ranges.

The crude materials are blended, hammer milled, magnetted, sieved then extruded twice through deairing pugmills. They are then sealed airtight in both a thin inner and a thick outer polythene bag, which enables long term storage.

Origin: Made in Queensland with Australian local materials

### Glazes

All standard raku, earthenware, midfire and stoneware glazes can be used with this body.

Clear Glazes: 5223, 5381, 5490, 6250, 4914, 6031 & 6327.

### Packaging

Plastic Clay ~12.5 kg packs and ~1-1.25kg samples.

### Technical:

**Bisque:** 1000-1060°C Orton Cone 06-04

**Firing range:** 1000-1280°C Orton Cone 06-9

**Mesh size:** 14 mesh Hammer Milled

**Texture:** Medium

**% Shrinkage wet to dry:** 5.0%

**% Shrinkage wet to bisque:** 5.8%

**% Shrinkage wet to fired:** 7.1% @ 1080°C

**% Shrinkage wet to fired:** 10.1% @ 1280°C

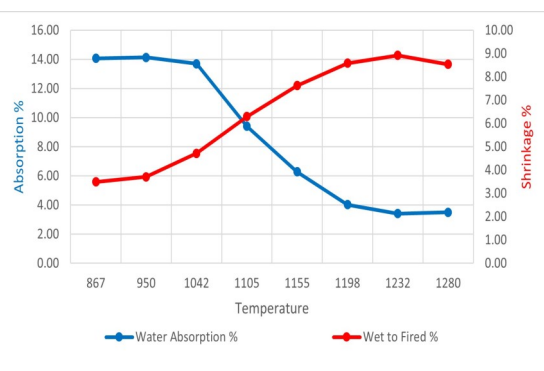
**Absorption:** Bisque = 16.4%

**Vitreous Temperature:** >1320°C Orton Cone 11

**Fired colour (oxidation):** Flecked buff mottle

**Fired colour (reduction):** Light grey mottle with specks

Typical Chemical Analysis	
SiO <sub>2</sub>	58.42%
Al <sub>2</sub> O <sub>3</sub>	26.43%
TiO <sub>2</sub>	1.2%
Fe <sub>2</sub> O <sub>3</sub>	2.56%
CaO	0.27%
MgO	0.67%
Na <sub>2</sub> O	0.87%
K <sub>2</sub> O	2.00%
MnO <sub>2</sub>	0.58%
L.O.I.	6.96%



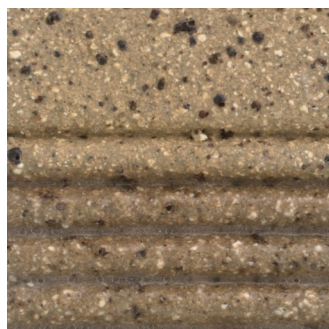
1080°C



1240°C



1280°C Oxidation



1280°C Reduction

