

# Feeneys Clay Bodies

## Feeneys Chocolate Brown

**FCB**

**AR560**

**Bisque: 1046°C Orton Cone 05 - Minimum**

**Firing Range: 900-1200°C Orton Cone 010 -5**

Delicious looking Chocolatey clay....

Beautifully plastic and you can throw, hand build, coil and slab.

Has especially wonderful fired results under Cesco 6251 white glaze.

Fires to a medium brown at earthenware and a beautiful rich chocolate brown at 1200.

Firing range of 900 to 1200.

**Recommend a slow bisque fire to Cone 05.**

Suits glazes from earthenware to midfire.

The crude materials are blended, hammer milled, magnetted, sieved then extruded twice through deairing pugmills. They are then sealed airtight in both a thin inner and a thick outer polythene bag, which enables long term storage.

Origin: Made in Queensland with a majority of Australian local materials

### Glazes

All standard raku, earthenware, midfire and stoneware glazes can be used with this body.

Clear Glazes: 5223, 5381, 5490, 6250

### Packaging

Plastic Clay ~12.5 kg packs and ~1-1.25kg samples.

### Technical:

**Bisque:** 1000-1060°C Orton Cone 06-04

**Firing range:** 1000-1200°C Orton Cone 06-5

**Mesh size:** 14 mesh Hammer Milled

**Texture:** Medium-Coarse

**% Shrinkage wet to dry:** 5.3%

**% Shrinkage wet to bisque:** 6.0%

**% Shrinkage wet to fired:** 8.5% @ 1080°C

**% Shrinkage wet to fired:** 11.0% @ 1200°C

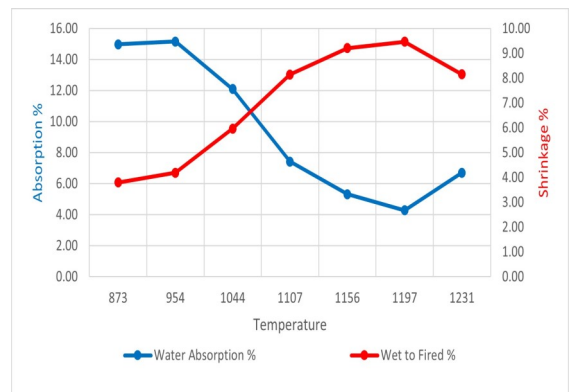
**Absorption:** Bisque = 13.9%

**Vitreous Temperature:** >1200°C Orton Cone 5/6

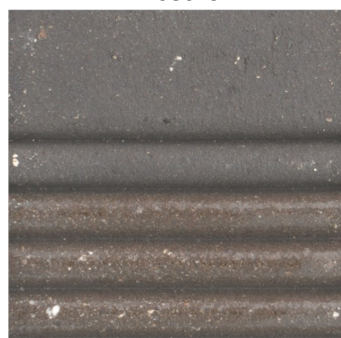
**Fired colour (1200):** Rich chocolate brown

**Fired colour (reduction):** N/A

Typical Chemical Analysis	
SiO <sub>2</sub>	55.63%
Al <sub>2</sub> O <sub>3</sub>	22.66%
TiO <sub>2</sub>	1.30%
Fe <sub>2</sub> O <sub>3</sub>	5.33%
CaO	0.10%
MgO	0.72%
Na <sub>2</sub> O	0.40%
K <sub>2</sub> O	2.51%
MnO <sub>2</sub>	4.75%
L.O.I.	6.68%



1080°C



1200°C

